

THE
ENGINE
ROOM

Using Technology in Human Rights

March 1st, 2019

Presented by Lesedi Bewlay



THE ENGINE ROOM

We provide support that helps CSOs use data and technology more effectively

WHAT WE'VE LEARNED

Trivial challenges are nontrivial

Technology doesn't need to be fancy to be impactful

Working with technology means committing to learning





CHOOSING THE RIGHT TOOL

We have developed a selection tool called Alidade to assist with this process

- Research the people, the problem, and the technology
- Think twice before you build
- Get a second opinion. Someone else has probably tried a similar approach before you
- Always take it for a test drive
- You may not get it right first time
- Keep thinking about what is and isn't working

Choosing technology is hard. Alidade can help.

Use Alidade to create a plan for finding technology tools
that suit your social change project.

Built on in-depth research in Kenya and South Africa.
Designed for activists and social change organizations everywhere.

Start Alidade

Complete this interactive guide and get a planning
document ready to be shared with colleagues, technical
developers or funders.



**Design with
the user**



**Build for
sustainability**



**Reuse and
improve**



**Understand
the existing
ecosystem**



**Be data
driven**



**Address
privacy &
security**



**Design
for
scale**



**Use open
standards**



Be collaborative

WHAT TO THINK ABOUT WHEN USING NEW TECH

- What do your users want?
- Who is your target audience?
- Technical considerations
 - Infrastructure
 - i. Cloud vs In-house
 - Internal Capacity
 - i. Human resources
 - Open Source or Licensed

STEPS TO IMPLEMENTATION

- Think User Centric
- Data and Technology Audit
- Requirements / Functionalities / Specifications
- Build a Roadmap
- Rollout



SUSTAINABILITY

- Always think and plan for the long term
- Maintenance
- Keeping up to date
- Financial and Human Implications

? SECURITY AND DATA PROTECTION

- You should approach security holistically
- **Common data protection principles:**
 - Collection of data should be *limited*
 - Data must be collected for a *specific purpose*
 - Onward use of the data requires *consent* or *legal authority*
 - Data should be *accurate* and kept up to date if necessary
 - Individuals can *obtain data about them* held by others
 - Individuals *can require correction or erasure* of personal data



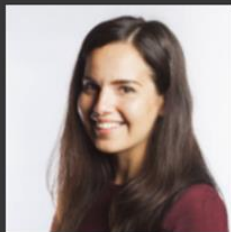
UNDERSTANDING THE RISKS

Potential threats:

- Identity theft
- Security (eg kidnapping in Central America)
- Association with high-risk groups (eg LGBT+ issues)
- Combining with data from other sources

Featured Community Members

The Responsible Data community is diverse and our passions are, too. We have a unifying interest in supporting the responsible use of data in social change efforts. If you want to meet others interested in the vanguard of privacy, equity, transparency and security of data in the 21st century social sector, [join us!](#)



[Learn more about the Community](#)

responsibledata.io



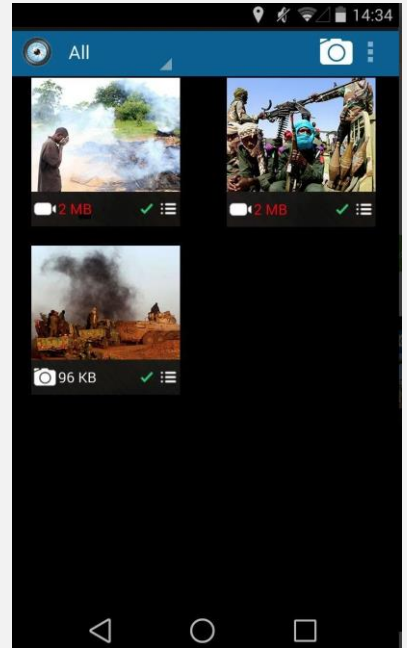
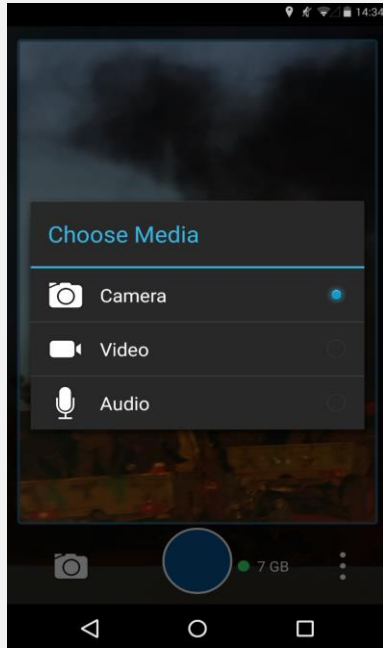
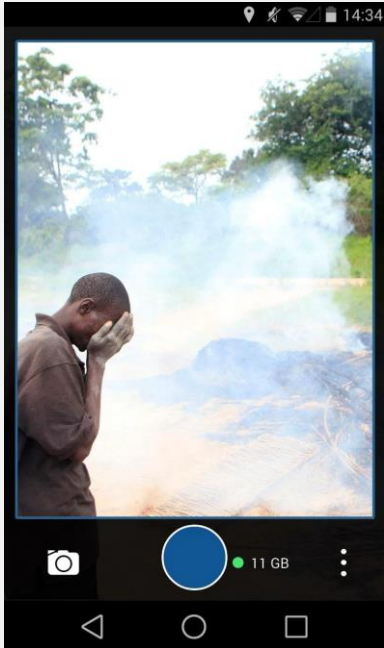
EXAMPLES

- What is the tool
- How is it being used
- What impact does it have
- How could you potentially use it

1. Ushahidi

The screenshot displays the Ushahidi web application interface. The browser address bar shows the URL <https://uchaguzi.or.ke/views/map>. The main content area is a map of Kenya and its neighboring countries (Uganda, Rwanda, Burundi, Tanzania), overlaid with numerous colored pins and circles, each containing a number. The pins are primarily yellow and green, with some blue and red ones. The sidebar on the left contains the Ushahidi logo, a mission statement, and a 'HOW TO REPORT' section with four numbered steps: 1. SMS: 20166; 2. Click here to submit via Facebook; 3. Twitter hashtags: #uchaguzike, #uchaguzike2017, #uchaguzi; 4. Email: reports@uchaguzi.or.ke. Below the reporting instructions are four filter buttons: 'Counting and Results' (54), 'Polling Station Administration' (71), 'Positive Events' (189), and 'Security Issues' (89). The top navigation bar includes a search bar, a 'SORT & FILTER' dropdown, and a 'SHARE' button. The bottom right corner of the map area has a small copyright notice: '© OpenStreetMap. © Maabox | Improve the underlives map'.

2. EyeWitness project



THE
ENGINE
ROOM

Lesedi Bewlay

lesedi@theengineroom.org

@EngnRoom

www.theengineroom.org